

**COMMERCIAL SYSTEM RELIEF PROGRAM
DISTRIBUTION LOAD RELIEF PROGRAM**
NEW YORK UTILITY DEMAND RESPONSE PROGRAMS



THE ELECTRIC INDUSTRY IN THE UNITED STATES IS CHANGING.

Across the country, technological innovation and the increasing competitiveness of renewable energy resources are enhancing the way America generates, distributes, manages, and consumes electricity.

New York State has taken a leadership role in the way our nation's electrical grids meet the future to ensure consumers benefit from the industry's evolution.

Governor Andrew Cuomo's *Reforming Energy Vision (REV)*, enacted in 2015, along with regulatory changes introduced by the Public Service Commission (PSC) are promoting efficient use of energy, deeper penetration of renewable energy resources such as wind and solar, wider deployment of distributed energy resources, such as micro-grids, roof-top solar and other on-site power supplies, as well as battery storage.

The goal of these changes is to empower consumers like you with more choice in how your organization manages and consumes electricity.

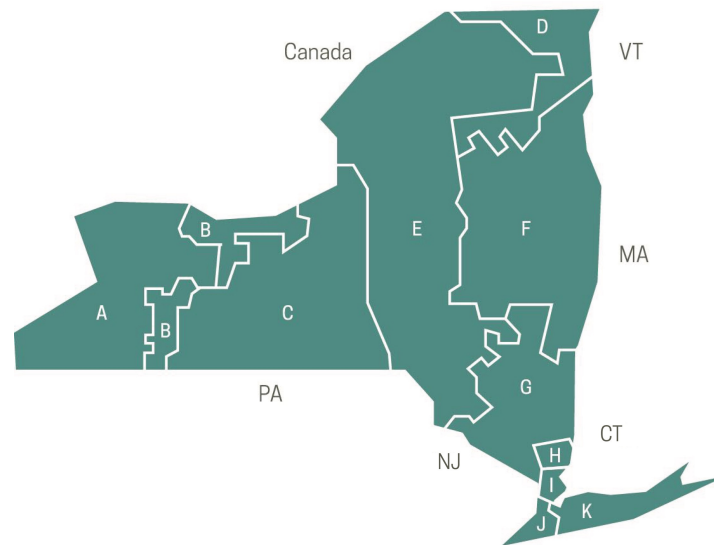
Several of New York State's electric utilities have recently created new demand response programs that pay businesses like yours for being a part of the solution by using less energy when the grid is stressed.

CPower can help your organization get the most out of these new programs.

In 2016, the New York Public Service Commission mandated that your local utility provide a **Commercial System Relief Program (CSRP)** throughout their entire service territory and a **Distribution Load Relief Program (DLRP)** in designated areas of their service territory.

The CSRP and DLRP are demand response programs that pay businesses like yours for using less energy when the grid is stressed. If you participate in one or both of these programs, you can earn revenue, protect the grid, preserve the environment, and help keep energy prices stable in New York.

CPOWER CAN HELP YOU MAKE IT HAPPEN.



WHAT IS DEMAND RESPONSE?

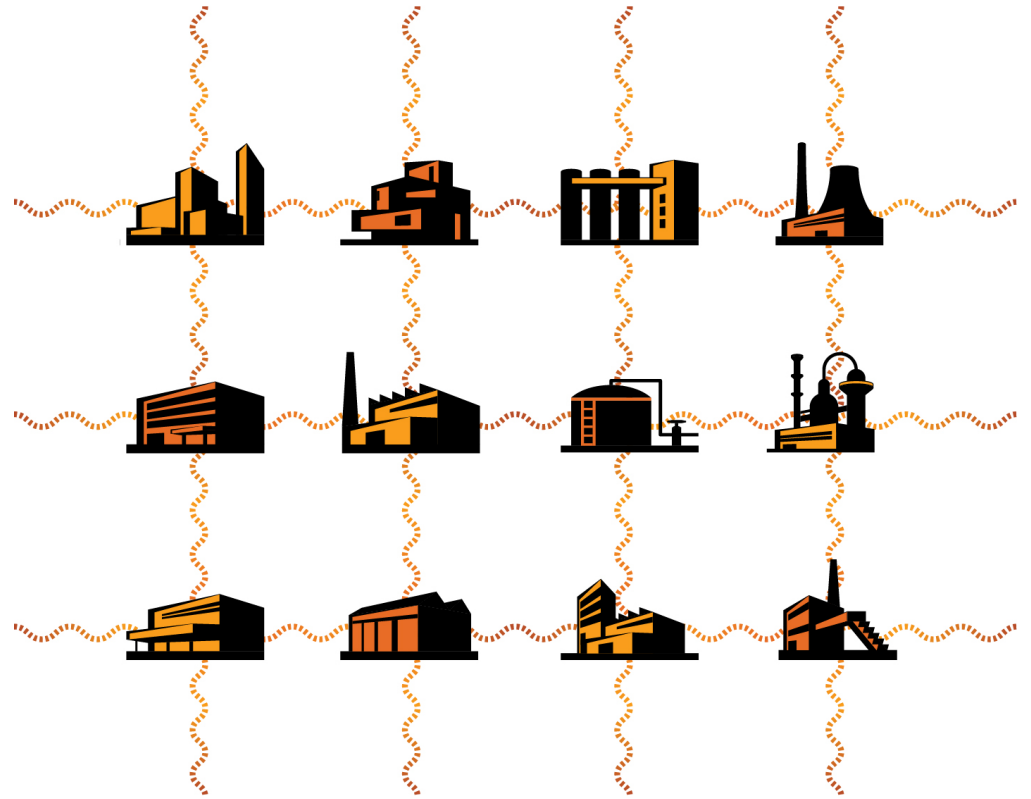
There are 8760 hours in a year.

Demand for electricity in New York is at its peak for about 40 of those hours. For most of those 40 peak hours, the NYISO is able to keep the grid in balance, avoiding brownouts or even blackouts as a result of the demand for electricity exceeding its supply.

Sometimes, however, the demand for electricity outpaces the grid's ability to supply it.

Instead of producing more electricity at great expense to consumers and the environment, the NYISO can offset the imbalance by reducing the amount of electricity being consumed during times when demand exceeds supply.

That's demand response, and it can be very financially rewarding to organizations like yours.



WHAT IS DEMAND RESPONSE?
Learn how reducing your energy usage can earn revenue for your business.
with CPower

WATCH THE VIDEO

LEARN ABOUT DEMAND RESPONSE FROM A CPOWER EXPERT

WHO IS CPOWER?

CPOWER IS AN ENERGY MANAGEMENT COMPANY.

We specialize in commercial and industrial demand response.

We create optimized energy management strategies that help businesses streamline their energy usage, offset costs, and reach their sustainability goals.

We're passionate about helping businesses reach their energy management goals and know there is no stronger resource to achieve those goals than the collaborative relationship we share with our customers.

Get to know us at the videos below.



THE CPOWER WAY

AT CPOWER, WE TAILOR EACH FACILITY'S DEMAND RESPONSE PARTICIPATION STRATEGY TO OPTIMIZE REVENUE POTENTIAL AND MINIMIZE OPERATIONS DISRUPTION.

We only do commercial and industrial demand response. Our mission is to help businesses streamline how they use power and see that they get paid well for doing it.

By working closely with your organization on a continual basis, we're able to fine tune your demand response participation over time, which will maximize your energy savings and ensure you receive the money you deserve for your curtailment efforts.

When it comes to improving how your company uses energy, CPower delivers the kind of demand side results that our competitors who focus on both demand and supply side energy management simply can't match.

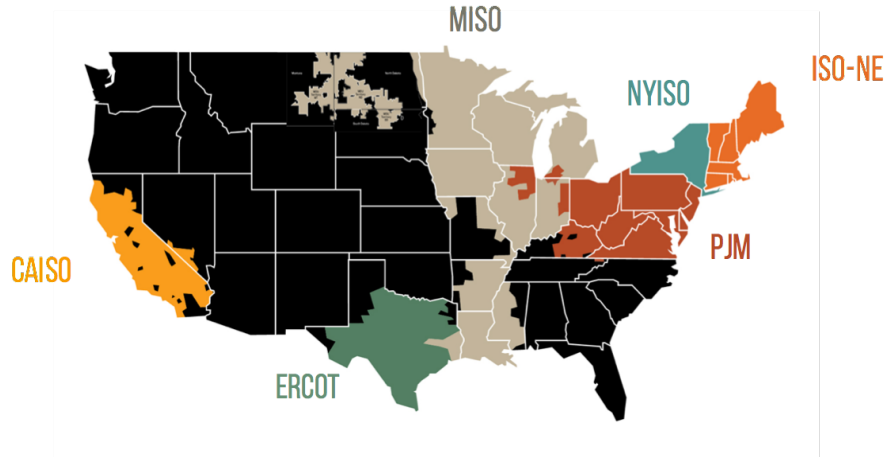


NATIONAL EXPERIENCE. LOCAL EXPERTISE.

CPower is a leading energy manager in each of the country's open energy markets. We serve well over 1000 customers at thousands of sites across a broad range of vertical markets: from large retailers with hundreds of locations to industrial entities with multiple sites of various sizes.

We strive to give each one of them the personal attention they deserve. We're familiar with the intricacies of the New York market and we have experts to help customize and optimize the most suitable program for each of your local facilities.

**CONSIDER US YOUR
PERSONAL
DEMAND MANAGEMENT
GUIDES**



CPOWER'S NEW YORK TEAM...



Left to Right: Robbie Davis, Account Executive, George McLachlan, Account Executive; Arusyak Ghukasyan, Engineer; Michael Mindell, National Account Executive; Carl Almeter, VP & General Manager; Joanna Watkins, Account Manager; Michael Hourihan, Manager of Market Development; Brian Purvis, Operations Manager

At CPower, we understand that energy management is not a one-size-fits-all endeavor.
That's why we take the time to learn about the intricacies of your business.
Then we work with you to create customized curtailment strategies that enable your organization
to earn revenue from energy you didn't use, without disrupting your day-to-day business.

Your CPower team will be with you every step of the way.
Always.

DISTRIBUTION LOAD RELIEF PROGRAM

COMMERCIAL SYSTEM RELIEF PROGRAM

Both the Commercial System Relief Program (CSRP) and the Distribution Load Relief Program (DLRP) pay businesses to curtail energy when the New York grid is stressed due to demand for electricity exceeding its supply.

When you participate in either or both of the CSRP or the DLRP, you not only earn revenue by using less energy, but you're also helping to reduce energy costs for your business and for your community. Because of the aggregated megawatts curtailed by businesses participating in both programs, the New York grid is able to delay or eliminate the need for new generation.

These local utility-run demand response programs help keep electricity prices in your community stable. If you participate in one or both of these programs, that means **YOU** help keep electricity prices stable for businesses in your community.

CPower can help you get the most out of either the DLRP or the CSRP by working closely with your organization to develop a customized curtailment strategy that suits your specific needs.

WHAT'S THE DIFFERENCE BETWEEN THE DLRP AND THE CSRP?

The Commercial System Relief Program (CSRP) and the Distribution Load Relief Program (DLRP) are very similar.

The biggest difference between the two is the amount of advance notification time participants in each program have to curtail their loads when a demand response event is called.

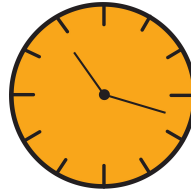
In the CSRP, participants are notified 21 hours in advance of an event and then again 2 hours prior to the event.

Participants in the DLRP are notified up to 2 hours prior to the event.

On the next pages, we list the parameters and guidelines for both programs.

EVENT NOTIFICATION

CSRP
21 hours and
again 2 hours prior



DLRP
2 hours prior

COMMERCIAL SYSTEM RELIEF PROGRAM (CSRP) DISTRIBUTION LOAD RELIEF PROGRAM (DLRP)

PROGRAM GUIDELINES



Minimum Size	DLRP & CSRP: 50kW
Participation	Customer participates for summer season from May 1 through September 30
Number & Duration of Events	DLRP: Participants agree to provide the load reduction for a minimum of 4 hours. Customer can be called anytime 6am to midnight. CSRP: Participants agree to provide the load reduction for a minimum of 4 hours. Customer call window varies by distribution utility and service territories.
Notification	DLRP: Up to 2 hours prior to the start of the event. CSRP: 21 hours advance notice and then up to 2 hours prior to event start.
Compensation	Program capacity and energy payment incentives vary by distribution utility and service territory. Please contact CPower today to determine current payment incentive values.
Baseline (ACL)	Customer Baseline Load (CBL): Average of the usage of each hourly interval of the top 5 days out of the last 10 eligible weekdays.
Settlements	Customers are paid seasonally their portion of the capacity and energy payments.
Compliance	Customers are required to curtail at least their committed load during events and test events
Consequence of Non-Performance	DLRP & CSRP: No penalty but de-rating applies which is based on performance in tests or events.
Testing	A 1-hour test is called during each seasonal capability period. (Notified similar to an event)
Enrollment Deadline	DLRP: April 1st for May 1st start; May 1st for June 1st start. CSRP: April 1st for May 1st start; May 1st for June 1st start.
Metering	Each account must have a 15 minute interval meter.

UPSTATE UTILITY DLRP PROGRAMS - 2017

DISTRIBUTION LOAD RELIEF PROGRAMS OVERVIEW

Program Feature	CHE	LIPA	NGrid	NYSEG	O&R	RG&E
Eligible SC Rates		1, 2, 11-13, 16 Primary and secondary voltage ONLY	1, 1C, 2, 3, 3A, 4, 7, 12	1-3, 6-12	1-3, 9, 15, 19-22, 25	1-5, 7-11, 14
Eligible Territory		Whole Territory	Kenmore	Designated Areas*	Whole Territory	Designated Areas*
Base Capacity Payments per kw/mo		\$3.00	\$5.00	\$2.75	Tier 1 - \$3.00 Tier 2 - \$10.00	\$3.25
Bonus Capacity Payments >= 5 events/season		\$3.00	\$5.00	\$2.75	Tier 1 - \$4.00 Tier 2 - \$11.00	\$3.25
Base Performance Payments per kWh		\$0.25	\$1.22	\$0.15	\$0.50	\$0.15

Common Features

- Season: May 1 to September 30
- April 1 deadline for May enrollment, May 1 deadline for June enrollment
- 2-hour event notice, 4-hour obligation, availability from 6a to 12a
- One 1-hour test called per season
- No penalties, though payments based on de-rated performance factor
- CBL: Top-5 of Last-10 with day-of adjustment

*NYSEG/RGE Designated Areas - can identify based on address

UPSTATE UTILITY CSRP PROGRAMS - 2017

COMMERCIAL SYSTEM RELIEF PROGRAMS OVERVIEW

Program Feature	CHE	LIPA	NGrid	NYSEG	O&R	RG&E
Eligible SC Rates	2, 3, 13, 14 (excluding TDM)	1, 2, 11-13, 16 Primary and secondary voltage ONLY	1, 1C, 2, 3, 3A, 4, 7, 12	1-3, 6-12	1-3, 9, 15, 19-22, 25	1-5, 7-11, 14
Event Trigger (Day-Ahead load forecast at V% of forecasted summer peak)	97%	NA	92%	92%	92%	92%
Base Capacity Payments per kw/mo	\$2.00	\$5.00	\$2.80	\$2.75	\$3.00	\$3.25
Bonus Capacity Payments >= 5 events/season	\$2.50	\$5.00	\$3.00	\$3.00	\$4.00	\$3.50
Base Performance Payments per kWh	\$0.15	\$0.25	\$0.17	\$0.15	\$0.50	\$0.15
Penalties	None, performance factor derating	1XBase Capacity Rate	None, performance factor derating			

Common Features

- Season: May 1 to September 30 – available territory-wide (Central Hudson proposed to eliminate May from capability period)
- April 1 deadline for May enrollment, May 1 deadline for June enrollment
- 21-hour event notice, 2-hour confirmation, 4-hour obligation
- One 1-hour test called per season
- CBL: Top-5 of Last-10 with day-of adjustment

THE VALUE OF AGGREGATION

The Commercial System Relief Program (CSRP) and the Distribution Load Relief Program (DLRP) are run by **aggregators**, which are licensed companies that have been approved by your utility to facilitate your demand response.

Aggregators are expert at helping organizations like yours maximize your demand response participation.

Getting the most out of the CSRP or DLRP begins with choosing the right aggregator to manage your demand response participation.

That's where CPower comes in.

WHAT IS AN AGGREGATOR?

An aggregator is a third party entity (separate from the bulk electric grid operator or utility) that handles the demand response participation of many organizations to ensure effective curtailment takes place when the grid is stressed.

Aggregators, like CPower, work with your organization to develop a customized curtailment strategy that suits the specific needs of your business.

Aggregators ensure safe, efficient energy curtailment that results in larger incentive payments for the participating organization.

The aggregator's mission is to optimize the participant's demand response in a way that minimizes risk and maximizes reward.

CPOWER IS A LEADING AGGREGATOR IN NEW YORK

CPower is the largest commercial and industrial demand response provider in the New York market. We aggregate hundred of facilities across the state, in every zone, and have enrolled our customers in 17 different demand response programs in New York

We're passionate about helping businesses reach their energy management goals and know that there is no stronger resource to achieve those goals than the collaborative relationship we share with our customers.

That's why we regularly over perform in every zone. Our vast, industry-diverse network of customers in New York makes us one of the largest aggregators in New York. CPower can greatly mitigate the risk of underperformance penalties your company may face should you be unable to meet the program's requirements for any reason.



THE CPOWER WAY

We're your energy ally.

WATCH THE VIDEO

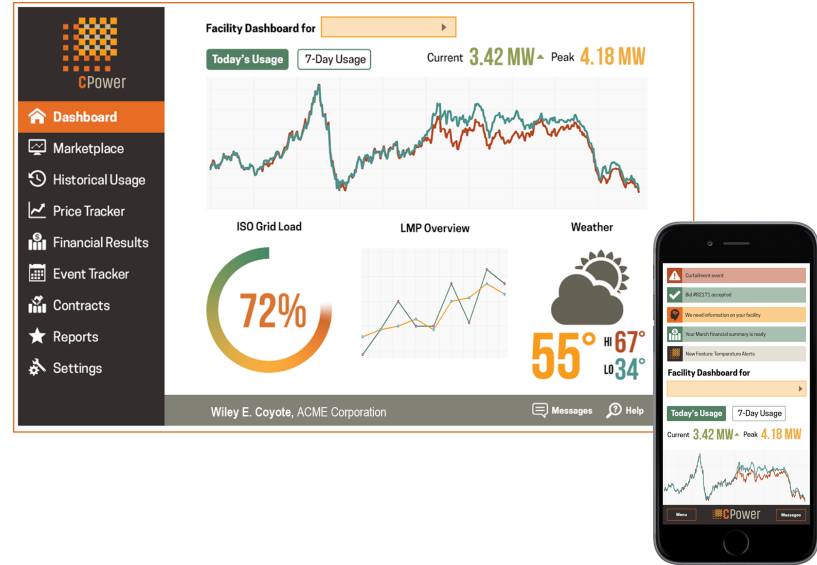
LEARN WHY CPOWER IS DIFFERENT

THE CPOWER APP: ENERGY MANAGEMENT AT YOUR FINGERTIPS.

CPower puts powerful energy management tools at your fingertips with a simple to use, demand response solution on your desktop or mobile device.

With a click of a mouse or a touch of your screen, the CPower App allows you to access all vital usage and load information quickly and intuitively.

We connect directly to your energy meter to give you real-time usage information to your desktop or mobile device.

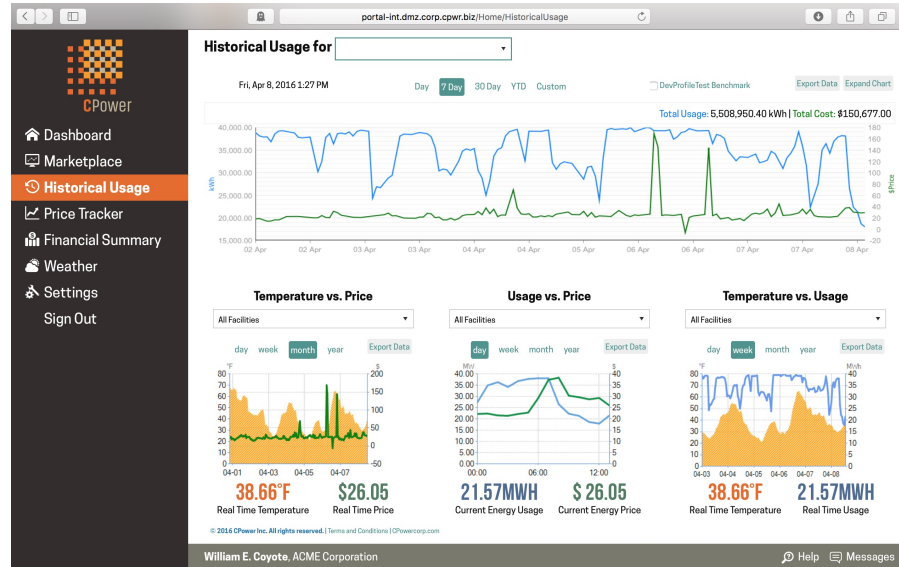


WATCH THE VIDEO
LEARN HOW CPOWER GIVES YOU THE TOOLS TO SUCCEED.

Our user-friendly interface makes it easy to gauge your energy consumption. You can watch energy price trends in your market, so you can make the right decisions to manage your energy costs, and ensure that your business is in compliance with the regulations that govern your market.

Combined with CPower's Link, an application program interface (API) that integrates with your existing building controls and automation, the CPower App helps you maximize results from demand response through automation, with minimal labor and effort on your part.

Streamlined data management features provide quick and convenient reporting, auditing, and financial reward calculations in simple graphical form.



CPOWER HAS THE TECHNOLOGY AND PEOPLE TO HELP YOU GET THE MOST OUT OF YOUR ADR.



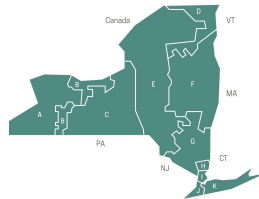
The CPower APP integrates real-time metering and other smart grid technologies, to maximize the benefits of ADR.

The CPower App and Link allow you to:

Use existing building control infrastructure and web services to provide companies with the ability to change load schedules and usage based on automated notification signals. (If you don't have existing controls, CPower may be able to install them at no out of pocket costs to you.)

- Monitor energy consumption for multiple sites.
- Get the information you need to pre-program effective strategies.
- Pay no out-of-pocket costs. (Offset through DR).
- Maximize the energy earning potential of your facilities without negatively affecting your production or operations.

CPower  **Link** CPower also provides CPower Link, an energy management platform that integrates with your existing building controls and automation.

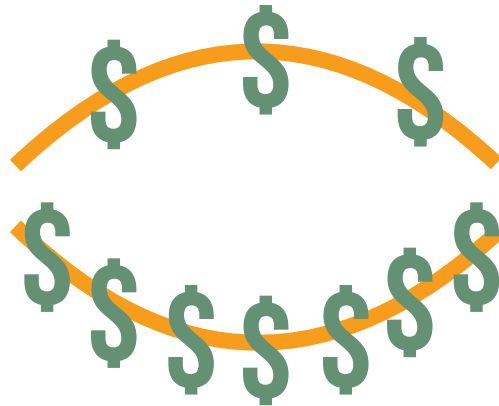


**CLICK TO LEARN HOW ADR
CAN BENEFIT YOUR BUSINESS**

EARN BACK WHAT YOU'VE PUT IN

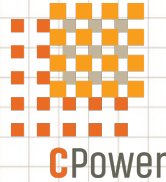
As part of a statewide initiative to maintain nuclear power plants, your organization is already paying a mandatory energy tax with a portion of your electric bill.

Participating in one or more of your local utilities new demand response programs is a great way to offset this cost and earn back what you've already paid in...and then some.



**CSRPs OR DLRPs
PROGRAMS**

Energy is forever in motion.
At CPower, we never stop moving in our pursuit to help your organization optimize
its demand response participation.



To get started offsetting your energy spend with the
Commercial System Relief Program (CSR) or the Distribution Load Relief Program (DLRP)
call 844-276-9371 to speak with a CPower team member
and schedule a no-obligation earnings assessment for your organization or visit us online.

For DLRP information: cpowerenergymanagement.com/ny-dlrp/

For CSR information: cpowerenergymanagement.com/ny-csrp/

